



**FOR WATER HEATING APPLICATIONS**

## Model RA-32

### Four-Chamber Tankless Electric Water Heater

**Description:** The RA-32 is used in demanding applications where incoming water temperatures or total flow requirements dictate more power than the RA-28. Ideal for the whole house and light commercial applications such as: offices, specialty restaurants, convenience stores, salons and pet-grooming shops. This on-demand tankless water heater is a powerful replacement for traditional tank-type heaters or for use as a booster to a traditional tank water heater or active renewable energy systems such as solar and geothermal water heating systems. The temperature activated control works effectively in re-circulating systems or in combination with tank-type heaters to supply special requirements like body spas or roman tub fillers. A minimum 200 AMP whole-house electrical service is typically required.

#### Features:

- UL 499 Listed for Water Heating Applications
- No minimum flow required for activation
- Built-in DSM Utility Integration option
- Compatible with Home Energy Management
- Very small & compact with no moving parts
- Lightweight modular construction
- Standard 3/4 inch plumbing connections with no flow restrictions
- Compatible with all plumbing designs including recirculating, tubing and manifold systems
- Microprocessor digital control
- Power sharing power control technology
- Heats continuously and only when needed
- Self-diagnostics with redundant safety devices
- High performance DuPont polymer nylon chamber material
- Built-in leak detection and alarm
- Rust & corrosion resistant

#### Specifications:

Heat Output (max.): **109,211 BTU**

Power Rating (max.): **32KW**

Voltage Rating (Nominal): **240 VAC**

Current Rating (max.): **133 AMPS**

Panel Load Factor (40%): **53 AMPS**

Energy Factor: **0.99+**

Heating Elements: **8000 watts x 4**

Circuits Required: **4 ea. 2-wire w/ ground (#8cuAWG)**

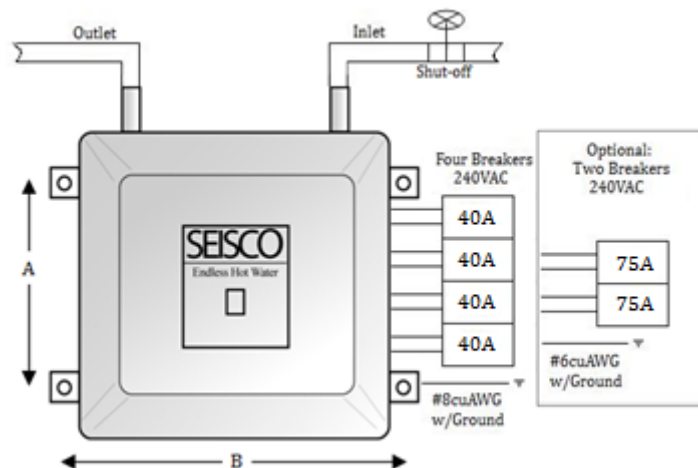
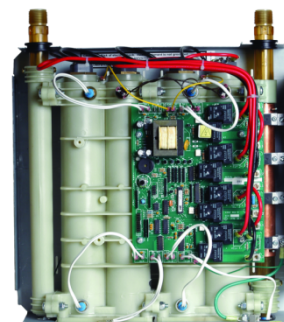
Breakers Required: **Four (4), double-pole**

Breaker Size: **40 AMPS each x 4 (Optional 75 x2)<sup>1</sup>**

Temp. Output (dial): **90F to 130F (32C - 52C)<sup>2</sup>**

<sup>1</sup> Install included jumpers on control board for this option and use 2 ea 2-wire circuits w/ground #6cuAWG rated for 75AMPS.

<sup>2</sup> Temperature factory set to 120F (49C)



#### Flow Ratings:

**Rise (°F)  
@ Flow (GPM)**  
109°F @ 2.0 GPM  
73°F @ 3.0 GPM  
55°F @ 4.0 GPM  
40°F @ 5.5 GPM

**Rise (°C)  
@ Flow (LPM)**  
57°C @ 8 LPM  
46°C @ 10 LPM  
38°C @ 12 LPM  
29°C @ 16 LPM

#### Mounting Holes:

A: 14 3/4" (362mm)  
B: 16 1/8" (410mm)

#### Dimensions:

Weight: 23 lbs. (10.4 kg)  
Height: 15 3/4" (400mm)  
Width: 15 3/4" (400mm)  
Depth: 6 1/4" (159mm)  
Fittings: 3/4" (200mm)

#### Approvals:

UL NSF HUD NEC  
(Not approved for Canada)