



Available in 80 Gallon Models

► 6-Year Limited Tank and Parts Warranty*

- Brass drain valve
- Choice of two models...storage tank or single element water heater, both specially equipped for installation with residential direct solar systems
- Patented R-Foam insulation process
- Temperature and pressure relief valve included
- Collector feed and return fittings located at front of tank for convenient installation
- Isolated tank design for better heat retention
- High efficiency heating element
- Rheemglas® tank lining resists corrosion and prolongs tank life
- Cold water inlet brings cold water to tank bottom to prevent mixing with heated water
- Anode rod equalizes aggressive water action for prolonged tank life
- Cold water inlet, hot water outlet, relief valve and anode rod at top of tank for easy access and fast, economical installation
- Automatic temperature control
- Over temperature protector

*See Residential Warranty Information Brochure for complete warranty information.

Energy Factor and Average Annual Operating Costs based on D.O.E. (Department of Energy) test procedures, D.O.E. national average fuel rate electricity 8.41¢/KWH.



DESCRIPTION				ROUGHING IN DIMENSIONS (SHOWN IN INCHES)			ENERGY INFORMATION
T Y P E	GAL. CAP.	MODEL NUMBER	MAXIMUM WATTAGE UPPER	HEIGHT A	DIAMETER B	APPROX. SHIP WT. (LBS.)	APPROX. R- FACTOR
	80	81V80HE-1	6000 W	58-3/4	24-1/2	192	R-17.3
	80	81V80HE-T	Storage only	58-3/4	24-1/2	192	R-17.3

- Heaters furnished standard 240 volt AC.
- Units are shipped with a 4500 watt element. **If heating elements of different wattages than those shown are demanded by zone requirements, they must be specifically requested.**
- To prevent corrosion, proper pH levels in transfer fluid must be maintained.
- Solaraide models meet all current state requirements for solar storage tanks.
- The tanks are Rheemglas lined and are designed to operate up to 150 PSI.

A special 1/2" NPT opening is provided for installation of a "probe type" thermostat.

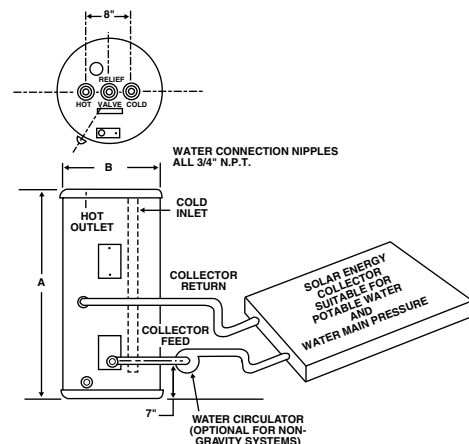


COPPER COIL DATA (Type L Copper)

Maximum pressure = 150 psi
 Maximum temperature = 185°F.
 Tube I.D. = 5/8"

Solaraide HE Tank Capacity	Coil Capacity Gallons	Length of Tubing Around Tank (Ft)
80 Gallons	2.2	120

PRESSURE DROP THROUGH COIL (Feet of H ₂ O)	
Flow Rate	Head Loss (Feet) 80 Gallon
1 GPM	1.3
2 GPM	4.8
3 GPM	10.0



In keeping with its policy of continuous progress and product improvement, Rheem reserves the right to make changes without notice.