

BR3-200

ACT D'MAND KONTROL Systems®



SUBMITTAL DATA

JOB/CUSTOMER:

SUBMITTED BY:

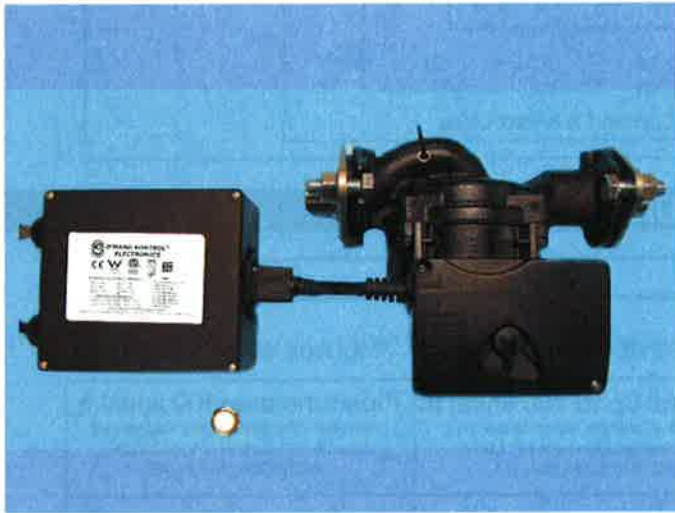
ENGINEER:

APPROVED BY:

CONTRACTOR:

ORDER NO:

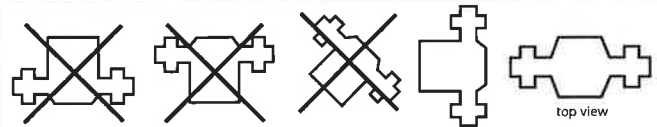
SPECIFICATION REF:



NOMENCLATURE

BR *Bronze*
3 *3- Speed*
200 *Series*

MOUNTING POSITIONS



TECHNICAL DATA

FLOW RANGE 0-33 GPM

HEAD RANGE 0-29 feet

MOTORS 2-Pole Single Phase

MIN. FLUID TEMPERATURE 36° F

MAX. FLUID TEMPERATURE 230° F

MAX. WORKING PRESSURE 145 PSI.

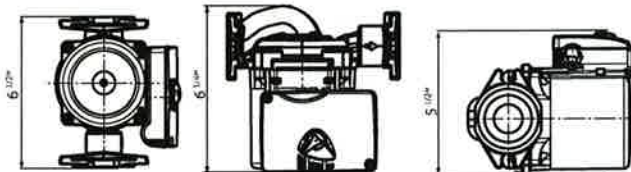
CONNECTORS GF 15/26 Flange
(3/4" Stainless Steel MIP)

HP MAX SPEED .262 hp

VOLTAGE (max. spd.) 115v/ 197 watts

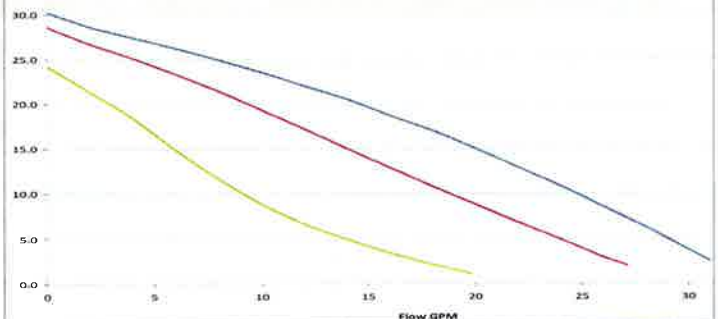
APPROX. SHIP WEIGHT 13 LBS

DIMENSIONS



* Dimensions shown do not include connectors

PERFORMANCE CHART



PHONE: 800-200-1956

www.gothotwater.com

FAX: 714-668-1927