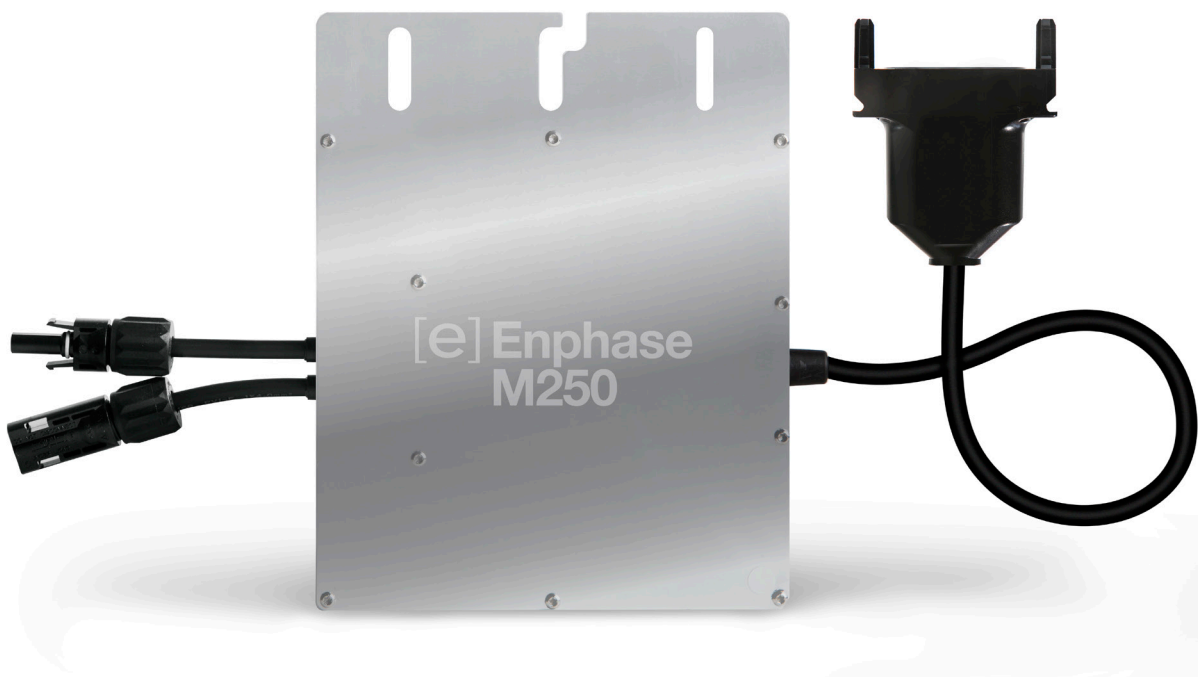


# Enphase® M250



The **Enphase® M250 Microinverter** delivers increased energy harvest and reduces design and installation complexity with its all-AC approach. With the M250, the DC circuit is isolated and insulated from ground, so **no Ground Electrode Conductor (GEC) is required for the microinverter**. This further simplifies installation, enhances safety, and saves on labor and materials costs.

The Enphase M250 integrates seamlessly with the Engage® Cable, the Envoy® Communications Gateway™, and Enlighten®, Enphase's monitoring and analysis software.

## PRODUCTIVE

- Optimized for higher-power modules
- Maximizes energy production
- Minimizes impact of shading, dust, and debris

## SIMPLE

- No GEC needed for microinverter
- No DC design or string calculation required
- Easy installation with Engage Cable

## RELIABLE

- 4th-generation product
- More than 1 million hours of testing and millions of units shipped
- Industry-leading warranty, up to 25 years

<b>INPUT DATA (DC)</b>	<b>M250-60-2LL-S22/S23/S24</b>	
Recommended input power (STC)	210 - 300 W	
Maximum input DC voltage	48 V	
Peak power tracking voltage	27 V - 39 V	
Operating range	16 V - 48 V	
Min/Max start voltage	22 V / 48 V	
Max DC short circuit current	15 A	
Max input current	10 A	
<b>OUTPUT DATA (AC)</b>	<b>@208 VAC</b>	<b>@240 VAC</b>
Peak output power	250 W	250 W
Rated (continuous) output power	240 W	240 W
Nominal output current	1.15 A (A rms at nominal duration)	1.0 A (A rms at nominal duration)
Nominal voltage/range	208 V / 183-229 V	240 V / 211-264 V
Nominal frequency/range	60.0 / 57-61 Hz	60.0 / 57-61 Hz
Extended frequency range*	57-62.5 Hz	57-62.5 Hz
Power factor	>0.95	>0.95
Maximum units per 20 A branch circuit	24 (three phase)	16 (single phase)
Maximum output fault current	850 mA rms for 6 cycles	850 mA rms for 6 cycles
<b>EFFICIENCY</b>		
CEC weighted efficiency, 240 VAC	96.5%	
CEC weighted efficiency, 208 VAC	96.0%	
Peak inverter efficiency	96.5%	
Static MPPT efficiency (weighted, reference EN50530)	99.4 %	
Night time power consumption	65 mW max	
<b>MECHANICAL DATA</b>		
Ambient temperature range	-40°C to +65°C	
Operating temperature range (internal)	-40°C to +85°C	
Dimensions (WxHxD)	171 mm x 173 mm x 30 mm (without mounting bracket)	
Weight	2.0 kg	
Cooling	Natural convection - No fans	
Enclosure environmental rating	Outdoor - NEMA 6	
<b>FEATURES</b>		
Compatibility	Compatible with 60-cell PV modules.	
Communication	Power line	
Integrated ground	The DC circuit meets the requirements for ungrounded PV arrays in NEC 690.35. Equipment ground is provided in the Engage Cable. No additional GEC or ground is required. Ground fault protection (GFP) is integrated into the microinverter.	
Monitoring	Free lifetime monitoring via Enlighten software	
Compliance	UL1741/IEEE1547, FCC Part 15 Class B, CAN/CSA-C22.2 NO. 0-M91, 0.4-04, and 107.1-01	

\* Frequency ranges can be extended beyond nominal if required by the utility

To learn more about Enphase Microinverter technology, visit [enphase.com](http://enphase.com)

