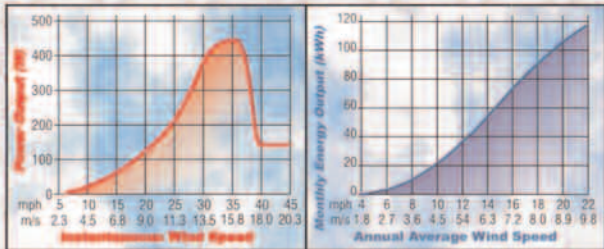


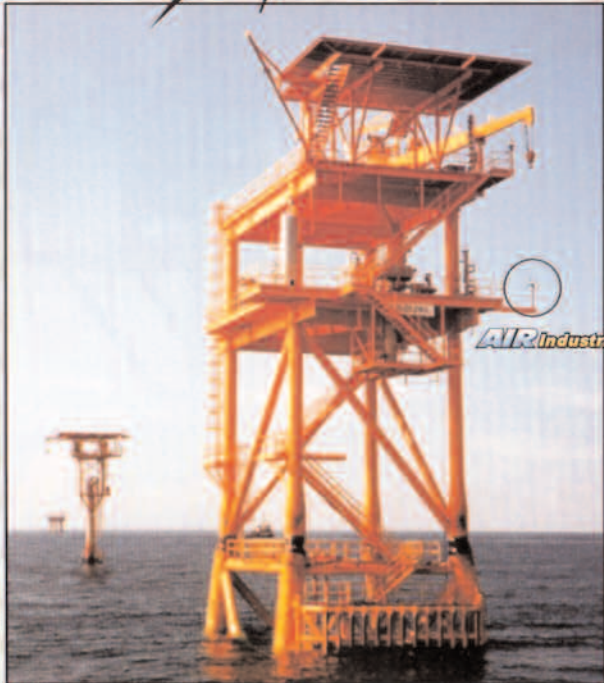
Performance Curve



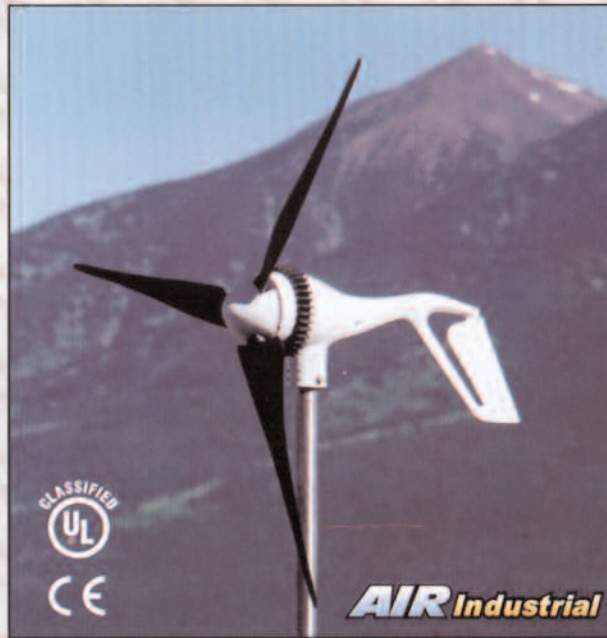
Rayleigh Distribution Curve k=2

Specifications

| | |
|---------------------|---|
| Rotor Diameter: | 46" (1.15 meters) |
| Turbine Weight: | 14 lbs. (6.2 kg) |
| Start up windspeed: | 6 Knots (7 mph, 2.7 m/s) |
| Voltage: | 12, 24, 48 VDC |
| Rated Output: | 400 watts at 26 Knots (30 mph, 13.4 m/s) |

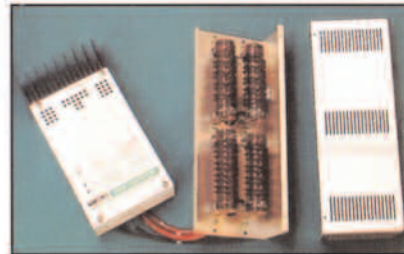


Offshore platform in the Gulf of Mexico



Features: Unprecedented 3 Year Warranty

- ↪ Anodized cooling fins for sustained high output
- ↪ High impact carbon fiber reinforced blades
- ↪ Variable pitch aeroelastic twist over-speed protection
- ↪ Exclusive brushless neodymium cubic curve alternator
- ↪ Maintenance free - only two moving parts
- ↪ Powder coated cast aluminum body
- ↪ Stainless steel hardware
- ↪ Now utilizes a PWM external regulator with resistive load dump for superior reliability in extreme wind conditions



3041001 0AA09A

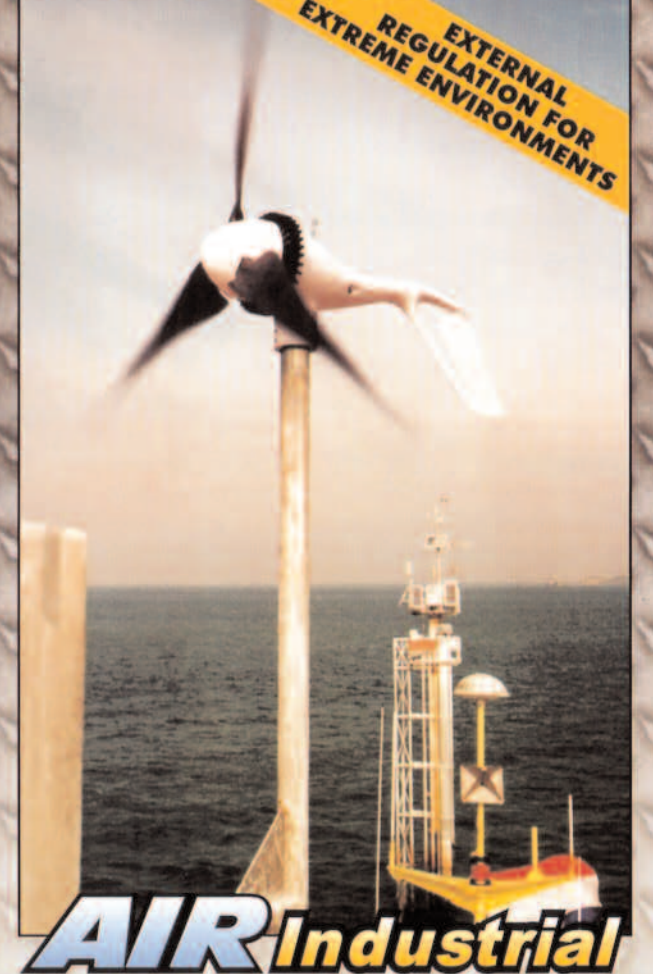
Southwest Windpower

Renewable Energy Made Simple

1801 West Route 66 • Flagstaff, Arizona 86001 USA
Tel 928-779-9463 • Fax 928-779-1485
www.windenergy.com • E-mail info@windenergy.com

REMOTE POWER FROM THE WIND!

EXTERNAL REGULATION FOR EXTREME ENVIRONMENTS



- ↪ Telecommunications systems
- ↪ Monitoring stations
- ↪ Offshore Platforms
- ↪ Navigational Aids

AIR Industrial

Minimize down times and reduce operating costs with an **AIR Industrial** wind turbine.

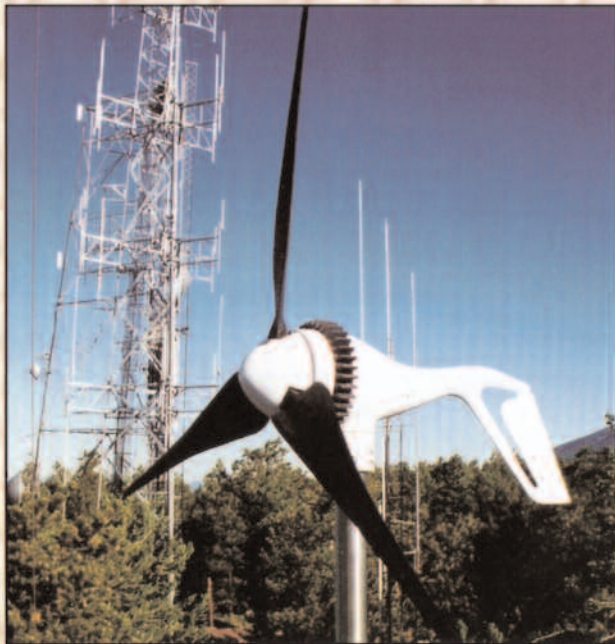
Based on the world's best selling wind turbine, the **AIR Industrial** has been designed to survive the harshest mountain-top and offshore sites.

When the **AIR Industrial** is combined with a solar array, you will experience a more consistent power supply by evening-out seasonal changes and weather fluctuations.

No need for a separate tower! The **AIR's** low wind loading and light-weight design allow it to be mounted on existing structures within a few hours.

In summary:

- More consistent power supply
- Reduced operating cost
- Reduced transportation costs
- Reduced wind loading
- Minimal space requirements
- Turbine is CE approved, emits no electrical interference
- Regulator is UL Listed and complies with EU directive 89/336/EEC for electromagnetic compatibility
- Simple installation

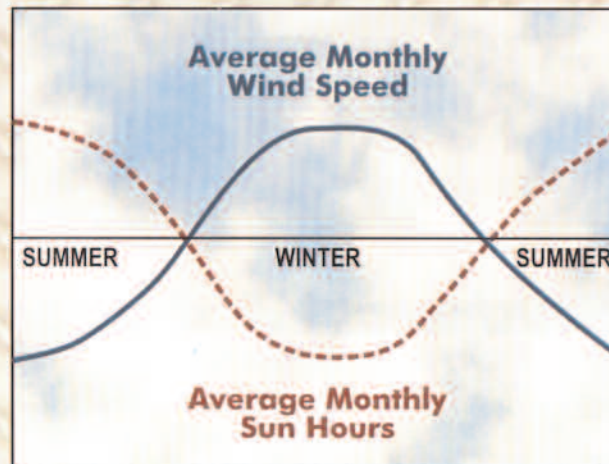


Three **Air Industrial** modules combined with PV provide power for a cell phone transmitter in the mountains near Phoenix, Arizona.

Utilize the **Air Industrial** with solar and have power in virtually any weather condition, all year round, at just about any remote site.

Seasonal Energy Resources

Wind & Solar



AIR Industrial

On land or at sea, the **Air Industrial** is a reliable energy source (shown here on a harbor beacon in Holland).

(Cover Photo)
An **Air Industrial** in the North Sea powering an offshore platform.

