



Model SH-28

Four-Chamber Tankless Electric Micro-Boiler

Description: The Model SH-28 four-chamber tankless electric space heater is designed for use in residential and commercial hydronic space heating applications such as, but not limited to, radiant floor heating, baseboard, hydro-heat pump and snow melting systems. This new micro-boiler is the ideal replacement for traditional boilers and tank-type heaters and is the enabling technology for use with active renewable energy systems such as solar and geothermal systems. The temperature activated control works effectively in low pressure and re-circulating systems. With optional equipment, the SH-28 can be used as the single heat source in combination systems for potable hot water and space heating. A minimum of 200 AMP whole house electrical service is recommended.

Features:

- UL 834 Approval Listing for Space Heating Applications
- Works with tubing and manifold systems
- No minimum flow activation required
- Built-in DSM Utility Integration option
- Compatible with Home Energy Management Systems
- Heats fluid mixtures including ethylene glycol (antifreeze)
- No moving parts
- Very small & compact
- Light weight modular construction
- No restriction to flow
- Standard 3/4 inch plumbing connections
- Microprocessor digital control
- Power sharing & variable power control technology
- Continuous venting
- Heats continuously only when needed, no storage
- Self-diagnostics
- Redundant safety devices
- High performance polymer nylon chamber material
- Built-in Leak detector and alarm
- Rust & corrosion resistant

Specifications:

Heat Output (max.): **95,560 BTU**
 Power Rating (max.): **28KW**
 Voltage Rating (Nominal): **240 VAC**
 Current Rating (max.): **116 AMPS**
 Energy Factor: **0.99+**
 Heating Elements: **7000 watts x 4**
 Circuits Required: **Four (4), 2-wire w/ ground***
 Breakers Required: **Four (4), double-pole***
 Breaker Size: **40 AMPS each x 4***

*Optional **two (2), 75 AMP** circuit supply – Check with manufacturer for jumpers that must be installed on control board for this option.

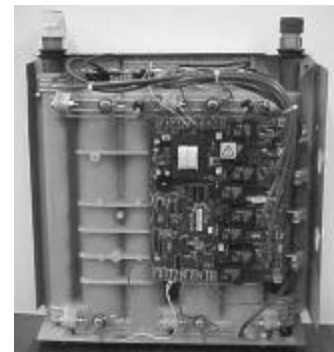
Flow Ratings:

Rise (Deg F) @ Flow (GPM)	Rise (Deg C) @ Flow (L/Min.)
95 °F @ 2.0 GPM	50 °C @ 8 L/min
76 °F @ 2.5 GPM	40 °C @ 10 L/min
64 °F @ 3.0 GPM	33 °C @ 12 L/min
48 °F @ 4.0 GPM	25 °C @ 16 L/min

Model SH-28

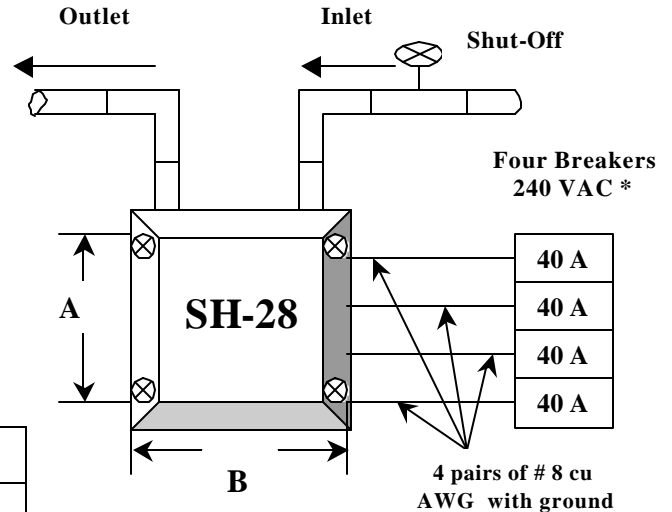


Exterior



Interior

INSTALLATION



Dimensions:

Weight: 23 lbs (10.4 kg)
 Height: 15 3/4" (400 mm)
 Width: 15 3/4" (400 mm)
 Depth: 6 1/4" (159 mm)
 Fittings: 3/4" (200 mm)

Mounting Holes:

"A" Mount: 14 1/4" (362 mm)
 "B" Mount: 16 1/8" (410 mm)

Approvals:

U.L. CSA NSF
 HUD NEC

Warranty is for Space Heating Applications only and does not cover use for residential or commercial water heating applications.