



## SEISCO PRODUCT FEATURES



### **Key Features (see comparison charts on back)**

- SEISCO's most powerful units can be installed in most homes having a standard electrical service from 150 to 200 amps
- Produces all the hot water every home needs – from the average to solutions for the extreme.

### **Patented Power Sharing – All elements run as one “virtual element”**

- Avoids boiling at shutdown – Eliminates scaling
- Only tankless water heater that doesn't require a water softener
- Stable temperature output - even as demand varies
- Extended element life
- No light flicker

### **No Flow Sensor (Patented Temperature Sensor/Microprocessor Detected Flow)**

- Ideal for Recirculation Systems and Booster Applications
- No Minimum flow requirement
- Fastest Start-up

### **Large Heating Chamber**

- No cold water sandwich effect – typical with gas
- Hot water faster, saving water by starting with a gallon of stored hot water after first use
- Stable temperature output - feels like a bottomless tank even as flow rate varies

### **Whole House Design**

- SEISCO was designed from “day one” to replace a tank water heater
- Other models combine several “point of use” heaters to try to match whole house needs
- Delivers endless hot water at over 4-5 GPM with precise temperature control.
- Government and Industry studies show (and even leading gas manufacturer's agree) that 98% of homes need only 2.5 GPM of hot water

### **Designed for Efficiency, Safety and Reliability**

- 99.4% Energy efficient
- Self Diagnosing – Easy to troubleshoot and repair
- Advanced Microprocessor Design with redundant safety controls
- Never Dry Fires - Redundant Fluid Level Detects
- No Flame – No gasses to vent
- 10 Year Limited (3/1 Year Full) Warranty
- 15-20 year rated life with little maintenance in normal operation



## SEISCO PRODUCT FEATURES

### Unit Sizing:

#### GPM at 40°F RISE (65°F GROUND WATER)

MODEL	BTU	KW	GPM
RA16	54,608	16.0	2.7
RA18	61,434	18.0	3.1
RA22	75,086	22.0	3.7
GAS	120,000	24.6	4.2
RA28	95,564	28.0	4.8
GAS	150,000	30.8	5.3
RA32	109,216	32.0	5.4
GAS	180,000	43.2	7.4
RA22x2	150,172	44.0	7.5
GAS	200,000	48.1	8.2
RA28x2	191,128	56.0	9.5
GAS	237,000	56.9	9.7
RA32x2	218,432	64.0	10.9
RA32+Tank	139,933	41.0	UNLIMITED*

\*Unlimited until tank is in recovery then 6-7 GPM

### Electrical Panel Sizing:

MODEL	BREAKER		Wire Size Cu AWG	Rated Load A	40% Load Factor A	Panel Size A
	1	2				

#### Two Chamber Units

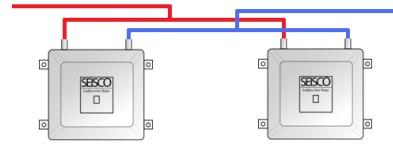
RA-5	25A		#12	21	8	
RA-7	30A		#10	29	12	
RA-9	40A		#8	38	15	
RA-11	50A		#6	46	18	
RA-14*	60A		#6	58	23	100
RA-16*	75A		#6	67	27	100

#### Four Chamber Units

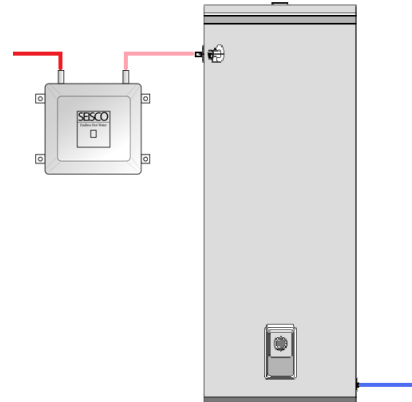
RA-18	40A	40A	#8	75	30	100
RA-22	50A	50A	#6	92	37	125
RA-28*	60A	60A	#6	117	47	150
RA-32*	75A	75A	#6	133	53	200

\* Optional: sub. 2x30A for ea. 60A, or 2x40A for ea. 75A

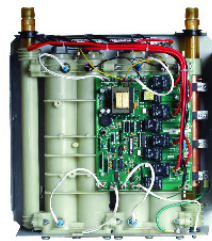
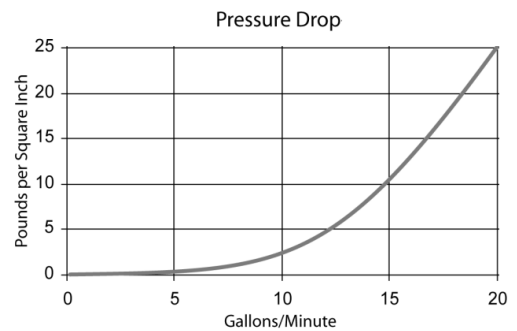
### Multi-Unit Plumbing:



CONNECT IN PARALLEL FOR DUAL INSTALLATIONS



CONNECT IN SERIES FOR BOOSTER INSTALLATIONS



THESE CHARTS ARE FOR REFERENCE ONLY – CONSULT THE SEISCO PRODUCT GUIDE AND LOCAL CODES FOR MORE INFO