



FOR COMMERCIAL WATER HEATING APPLICATIONS

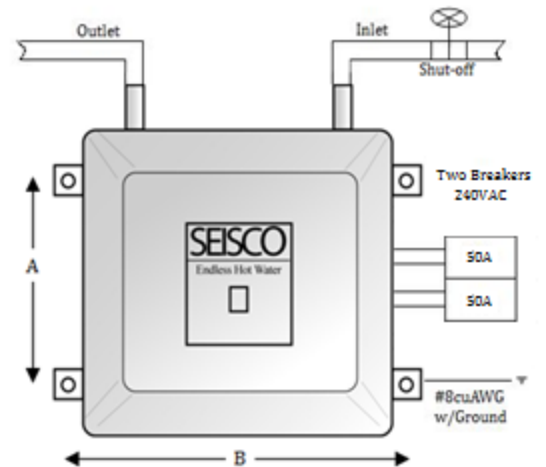
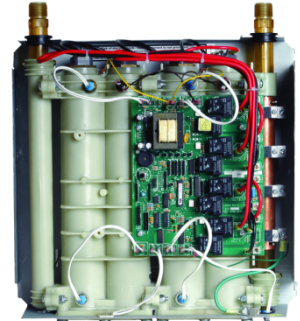
Model CA-22

Four-Chamber Tankless Electric Water Heater

Description: The CA-22 is a commercial model for providing a continuous supply of hot water for as long as you need it. Ideal for the whole house and also for commercial applications such as, specialty restaurants, convenience stores, salons and pet-grooming shops. This on-demand tankless water heater is a powerful replacement for traditional tank-type heaters and is the enabling technology for use as back-up to active renewable energy systems such as solar and geothermal water heating systems. The temperature activated control works effectively in re-circulating systems and in combination with tank-type heaters. A minimum 150 AMP whole-house electrical service is recommended.

Features:

- UL 499 Listed for Water Heating Applications
- No minimum flow required for activation
- Built-in DSM Utility Integration option
- Compatible with Home Energy Management
- Very small & compact with no moving parts
- Lightweight modular construction
- Standard 3/4 inch plumbing connections with no flow restrictions
- Compatible with all plumbing designs including recirculating, tubing and manifold systems
- Microprocessor digital control
- Power sharing power control technology
- Heats continuously and only when needed
- Self-diagnostics with redundant safety devices
- High performance DuPont polymer nylon chamber material
- Built-in leak detection and alarm
- Rust & corrosion resistant



Specifications:

Heat Output (max.): **75,080 BTU**
 Power Rating (max.): **22KW**
 Voltage Rating (Nominal): **240 VAC**
 Current Rating (max.): **91 AMPS**
 Panel Load Factor (40%): **37 AMPS**
 Energy Factor: **0.99+**
 Heating Elements: **5500 watts x 4**
 Circuits Required: **2 ea. 2-wire w/ ground (#8cuAWG)**
 Breakers Required: **Two (2), double-pole**
 Breaker Size: **50 AMPS each x 2**
 Temp. Output (dial): **90F to 130F (32C - 52C)²**

²Temperature factory set to 120F (49C)

Flow Ratings:

Rise (°F)
@ Flow (GPM)
 75°F @ 2.0 GPM
 60°F @ 2.5 GPM
 50°F @ 3.0 GPM
 37°F @ 4.0 GPM

Rise (°C)
@ Flow (LPM)
 39°C @ 8 LPM
 31°C @ 10 LPM
 26°C @ 12 LPM
 20°C @ 16 LPM

Mounting Holes:

A: 14 3/4" (362mm)
 B: 16 1/8" (410mm)

Dimensions:

Weight: 23 lbs. (10.4 kg)
 Height: 15 3/4" (400mm)
 Width: 15 3/4" (400mm)
 Depth: 6 1/4" (159mm)
 Fittings: 3/4" (200mm)

Approvals:

UL NSF HUD NEC
 (Not approved for Canada)