

# S3-100

# ACT D'MAND KONTROL Systems®



## SUBMITTAL DATA

JOB/CUSTOMER:

SUBMITTED BY:

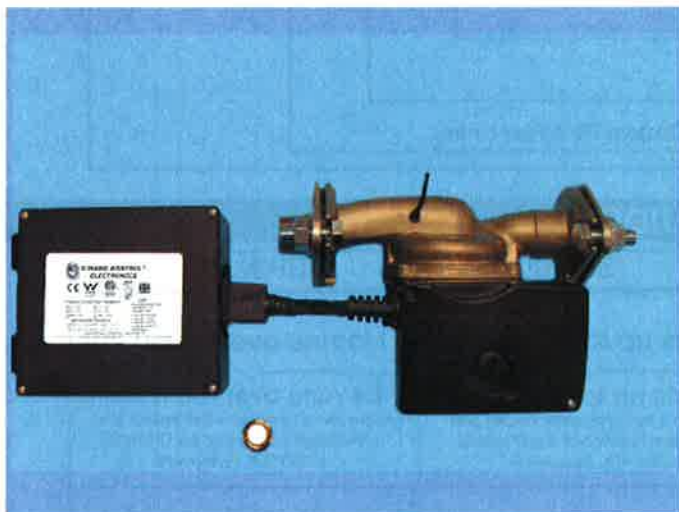
ENGINEER:

APPROVED BY:

CONTRACTOR:

ORDER NO:

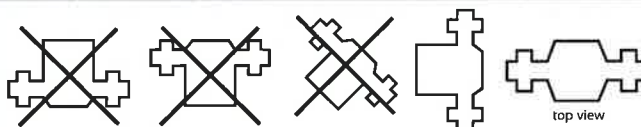
SPECIFICATION REF:



## NOMENCLATURE

**S** ..... Stainless  
**3** ..... 3-Speed  
**100** ..... Series

## MOUNTING POSITIONS



## TECHNICAL DATA

**FLOW RANGE** 0-25 GPM

**HEAD RANGE** 0-18 feet

**MOTORS** 2-Pole Single Phase

**MIN. FLUID TEMPERATURE** 36° F

**MAX. FLUID TEMPERATURE** 230° F

**MAX. WORKING PRESSURE** 145 PSI.

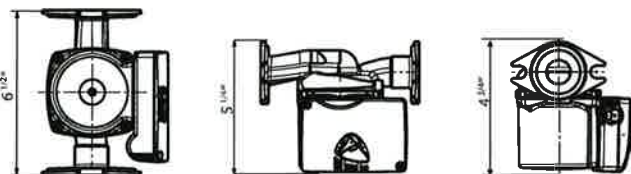
**CONNECTORS** GF 15/26 Flange  
(3/4" Stainless Steel MIP)

**HP MAX SPEED** .116 hp

**VOLTAGE (max. spd.)** 115v/ 245 watts

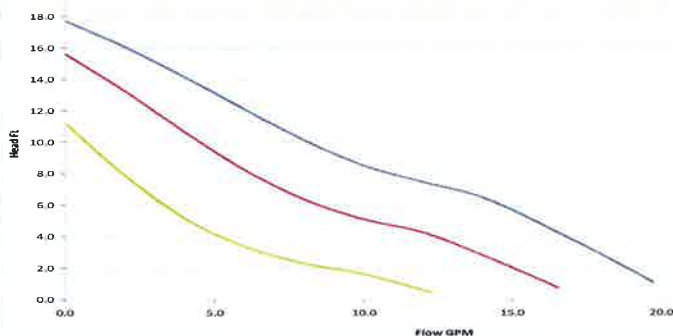
**APPROX. SHIP WEIGHT** 9 LBS

## DIMENSIONS



\* Dimensions shown do not include connectors

## PERFORMANCE CHART



PHONE: 800-200-1956

www.gothotwater.com

FAX: 714-668-1927

## NOMENCLATURE GUIDE

### TYPE KEY

**Example** C S BR 3 100 200 PF

C: Composite Pump

S: Stainless Steel Pump

BR: Bronze Pump

3: 3 Speed

100: 100 Series Small Stator Motor

200: 200 Series Large Stator Motor

PF: Pre Fabrication Kit- Under sink installation Kit Includes Custom T's & Flex Lines

## SIZING GUIDE

|                                   | C3-100                                                                                                                                           | S3-100                                                                                                                                            | BR3-200                                                                                                                                                 |
|-----------------------------------|--------------------------------------------------------------------------------------------------------------------------------------------------|---------------------------------------------------------------------------------------------------------------------------------------------------|---------------------------------------------------------------------------------------------------------------------------------------------------------|
| TANK                              | Homes up to 4,000 sqft                                                                                                                           | Homes up to 4,000 sqft                                                                                                                            | Homes <b>over</b> 4,000 sqft                                                                                                                            |
| TANKLESS<br>Standard Plumbing     | Pipe runs up to 60 lineal ft.<br><small>between a tankless water heater and<br/>installation location of the D'MAND<br/>KONTROL Systems®</small> | Pipe runs up to 100 lineal ft.<br><small>between a tankless water heater and<br/>installation location of the D'MAND<br/>KONTROL Systems®</small> | Pipe runs <b>over</b> 100 lineal ft.<br><small>between a tankless water heater and<br/>installation location of the D'MAND<br/>KONTROL Systems®</small> |
| TANKLESS<br>Dedicated Return Line | Pipe runs up to<br>120 lineal feet                                                                                                               | Pipe runs up to<br>200 lineal feet                                                                                                                | Pipe runs <b>over</b><br>200 lineal feet                                                                                                                |

## WARRANTY

ACT, Inc. D'MAND KONTROL Systems® will replace without charge (at the Company's option) any D'MAND KONTROL® pump, valve, or component part which is proven defective under normal use. Models C3-100, S3-100, and BR3-200: Warranty – (Five Years from date of purchase) Accessories: Hard-Wired Buttons, Wireless Transmitters and Receivers, all Hard-Wired or Wireless Motion Sensors and Receivers: Warranty – (One Year from date of purchase) Labor is not included with Limited Warranty.

In order to obtain services under this warranty, it is the responsibility of the purchaser to promptly notify the Company in writing and promptly deliver the item in question, delivery prepaid to the factory. The address for notification and delivery is ACT, Inc. D'MAND KONTROL Systems®, 3176 Pullman Street, Suite 119. Costa Mesa CA 92626.

If the product or part in question contains no defects as covered in the warranty, the purchaser will be notified and billed for parts and labor charges in effect at the time of factory examination and repair.

Any product or part not installed or operated in conformity with instructions or which has been subject to misuse, misapplication, the addition of petroleum based fluids or certain chemical additives to the system, or other abuse, will not be covered by this warranty.

ACT, Inc. D'MAND KONTROL Systems® OFFERS THIS WARRANTY IN LIEU OF ALL OTHER EXPRESS WARRANTIES. ANY WARRANTY IMPLIED BY LAW INCLUDING WARRANTIES OF MERCHANTABILITY OR FITNESS IS IN EFFECT ONLY FOR THE DURATION OF THE EXPRESS WARRANTY SET FORTH IN THE PARAGRAPH ENTITLED "LIMITED WARRANTY" AS SHOWN ABOVE.

THE ABOVE WARRANTIES ARE IN LIEU OF ALL OTHER WARRANTIES, EXPRESS OR STATUTORY, OR ANY OTHER WARRANTY OBLIGATION ON THE PART OF ACT, INC. D'MAND KONTROL® SYSTEMS.

ACT, INC. D'MAND KONTROL SYSTEMS® WILL NOT BE LIABLE FOR ANY SPECIAL INCIDENTAL, INDIRECT OR CONSEQUENTIAL DAMAGES RESULTING FROM THE USE OF ITS PRODUCTS OR ANY INCIDENTAL COSTS OF REMOVING OR REPLACING DEFECTIVE PRODUCTS.

This warranty gives you specific rights, and you may have other rights, which vary from state to state. Some states do not allow limitations on how long an implied warranty lasts or on the exclusion of incidental or consequential damages, so those limitations or exclusions may not apply to you.



www.gothotwater.com  
(800) 200-1956