

## Installation Instructions

**S-5!<sup>®</sup> Warning!** Please use these products responsibly! Visit our website or contact your S-5! distributor for available load test results. The user and/or installer of these parts is responsible for all necessary engineering and design to ensure the S-5-K Grip<sup>™</sup> has been properly spaced and configured.

**Notice to S-5! product users:** Due to the many variables involved with specific panel products, climates, snow melt phenomena, and job particulars, the manufacturer cannot and does not express any opinions as to the suitability of any S-5! assembly for any specific application and assumes no liability with respect thereto. S-5! products are tested for ultimate holding strength on various profile types and materials. This information is available from the S-5! website: [www.S-5.com](http://www.S-5.com). This document is an installation guide only and the photographs and drawings herein are for the purpose of illustrating installation tools and techniques, not system designs.

**The S-5-K Grip<sup>™</sup> clamp is designed to fit Klip Rib<sup>®</sup> and other bulb snap-together seams.**

The S-5-K Grip utilizes multiple inserts (sold separately) in order to accommodate a variety of bulb snap-together profiles. Each insert has a unique shape that allows for a tight fit and provides increased holding strength over other attachment options.

The appropriate seam profiles for each insert option are listed on the back of these installation instructions.

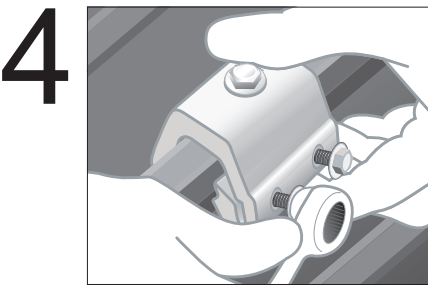
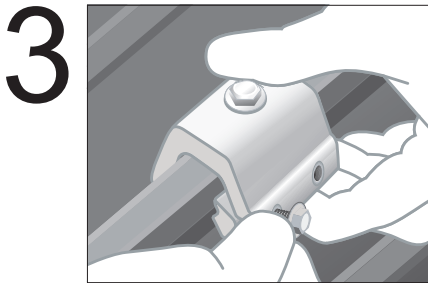
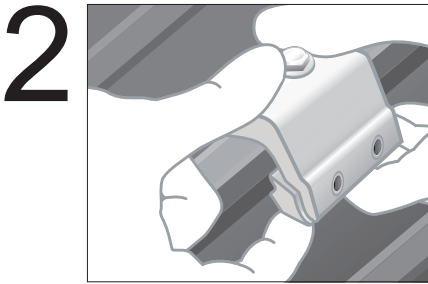
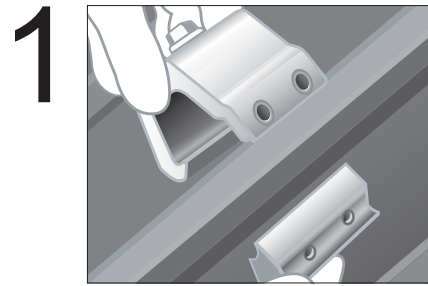
The head of the clamp's M8-1.25 X 13.00 mm Hex Flange Bolts control the amount of compression, which reduces the possibility of over-compressing the seam, and makes installation a snap!

## Tools Needed

- Ratchet or Screw Gun with 13.00 mm Hex

## To Install S-5-K Grip<sup>™</sup>

1. Position clamp insert at desired location along the rib, just under the fold of the rib.
2. Roll the clamp into position over the seam and clamp insert piece. Position the clamp so that it is centered over the clamp insert with approximately 2.00 mm of insert overhang on each side of the clamp.
3. Partially thread the two flanged bolts into the base of the S-5-K Grip by hand, or the single flanged bolt into the base of the S-5-K Grip Mini. The bolts should engage the divots in each end of the S-5-K Grip insert and in the center of the S-5-K Grip Mini insert.
4. Tighten the bolts at the base of the S-5-K Grip using a ratchet or screw gun with a 13.00 mm hex. For optimal holding strength, bolts should be tensioned to 200 inch pounds.



### Seam Profiles

**S-5-K Grip™ is designed to fit Klip-Rib® and other bulb snap-together seams.**

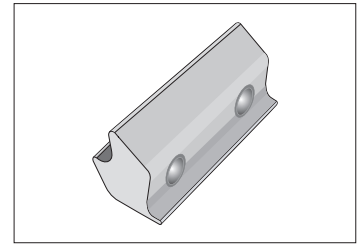
**Seam profiles for the S-5-GX 10 insert with the standard clamp  
(or S-5-GXM 10 mini insert with the mini clamp):**

- LYSAGHT KLIP-LOK® 406
- McElroy Metal Mirage
- AEP Span Klip-Rib®
- Metal Sales Clip-Loc
- SpeedDeck® SpeedDeck®
- Safintra Saflok 410
- Safintra Saflok 700
- Domico GBS Domitec® Dach
- And other similar profiles

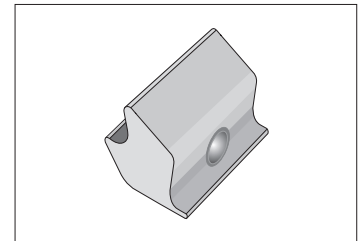
**Seam profiles for the S-5-GX 50 insert with the standard clamp  
(or S-5-GXM 50 mini insert with the mini clamp):**

- LYSAGHT KLIP-LOK Classic® 700
- LYSAGHT KLIP-LOK 700 Hi-Strength®
- Stramit Speed Deck Ultra®
- Fielders KingKlip® 700
- And other similar profiles

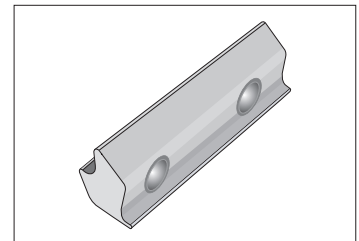
If you have a profile not listed here, please contact S-5!® to request a sample for testing.



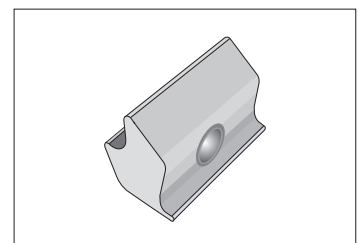
**S-5-GX 10 Insert**



**S-5-GXM 10 Mini Insert**



**S-5-GX 50 Insert**



**S-5-GXM 50 Mini Insert**

**S-5!® Warning! Please use this product responsibly!**