

# STP200-18/Ub-1

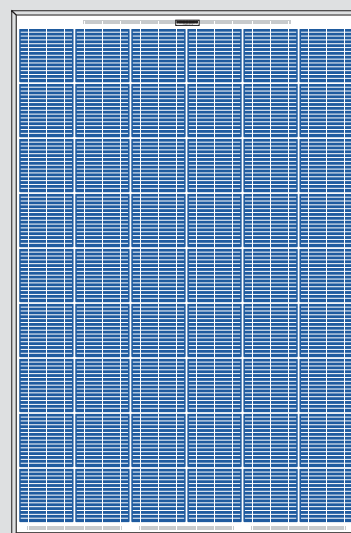
**STP190-18/Ub-1**  
**STP210-18/Ub-1**

Suntech's STP/Ub-1 is designed and built to deliver high efficiency and reliable power for on-grid residential and commercial systems worldwide. Relying on Suntech's renowned stringent manufacturing standards and latest PV technology, the module provides the highest possible energy output per Watt with a total module efficiency of 13.6%. A superior conversion rate and exceptional low-light performance enable it to deal with the most challenging conditions of military, utility, residential and commercial installations. The module is the perfect choice for those who demand outstanding performance and exceptional uniform appearance.

## Features and benefits

- High efficiency
- Nominal 18 V DC for standard output
- Outstanding low-light performance
- High transparent low-iron, tempered glass
- Unique techniques give the panel the following features: aesthetic appearance, high wind-pressure and snow load tolerance, and easy installation
- Unique technology ensures that water freezing and warping do not occur
- Designed to meet the unique demands of customers
- 25 year transferable power output warranty
- Class C fire rating
- UL listings: UL1703, cULus
- ISO 9001: 2001 and ISO14000 certified facilities

## High Efficiency, High Quality PV Module

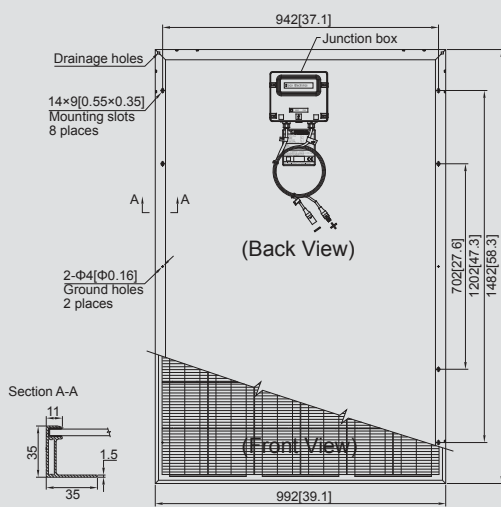


## Electrical Characteristics

Model	STP210-18/Ub-1	STP200-18/Ub-1	STP190-18/Ub-1
Open-circuit voltage (Voc)	33.6V	33.4V	33V
Optimum operating voltage (Vmp)	26.4V	26.2V	26V
Short-circuit current (Isc)	8.33A	8.12A	7.89A
Optimum operating current (Imp)	7.95A	7.63A	7.31A
Maximum power at STC (Pmax)	210Wp	200Wp	190Wp
Operating temperature	-40°C to +85°C	-40°C to +85°C	-40°C to +85°C
Maximum system voltage	600V DC	600V DC	600V DC
Series fuse rating	20 AMPS	20 AMPS	20 AMPS

STC: Irradiance 1000W/m<sup>2</sup>, Module temperature 25°C, AM=1.5

## Module Diagram



Note: mm[inch]

## Specifications

Cell	Multicrystalline silicon solar cells 156mm×156mm
No. of cells and connections	54(6×9)
Dimension of module	1482mm×992mm×35mm
Weight	16.8kg

## Temperature Coefficients

NOCT	45°C ± 2°C
Short-circuit current temperature coefficient	(0.055±0.01) %/K
Open-circuit voltage temperature coefficient	-(0.34±0.01) %/K
Peak power temperature coefficient	-(0.47±0.05) %/K
Power tolerance	±3%

NOCT: Nominal Operating Cell Temperature  
above data is only for reference

## Output

Cable	LAPP(4.0mm <sup>2</sup> )
Asymmetrical Lengths	1200mm(-) and 800mm(+)
Connection	MC Plug Type IV

## Characteristics

Module IV Graph 200W

