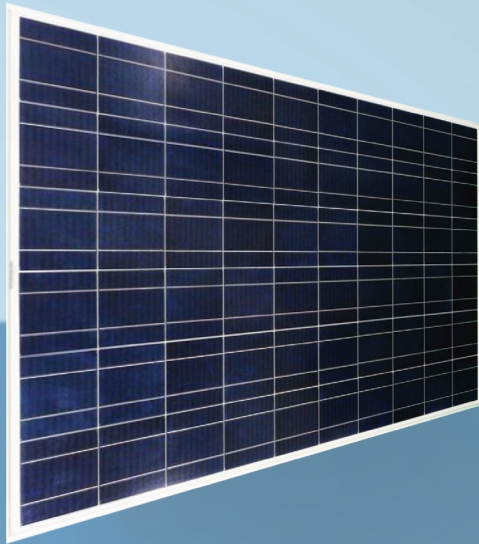


From the world leading  
PV research lab comes  
*sensible solar.*



## SUNIVA MVP™ SERIES MULTICRYSTALLINE SOLAR MODULES



### MVP SERIES 60 CELL MODULES

Suniva's MVP series modules consist of world class quality multicrystalline solar cells to bring you a reliable yield even under demanding conditions. Offering industry-leading performance, MVP modules have a positive power tolerance to ensure reliable output. Ideal for residential rooftop systems, and on or off-grid commercial and utility systems, MVP modules provide excellent value, performance and reliability.

Certifications':



### Engineering Excellence

- Built with world class quality multicrystalline cells, providing excellent performance value
- Suniva's state-of-the art manufacturing facility features the most advanced equipment and technology
- Suniva is a U.S. -based company spun out from the Georgia Tech University Center of Excellence in Photovoltaics (one of only two such research centers in the U.S.)

### Features

- Delivers panel efficiency conversion of 14 -15%
- Provides industry-leading 25 year linear warranty (with 10 year warranty on workmanship and materials)
- Salt spray and corrosion resistant; marine grade aluminum frame
- Ask about our Balance of System Solutions (BOSS)

### Quality & Reliability

Suniva MVP series modules are manufactured and warranted to our rigid specifications assuring quality worldwide. Our specifications include:

- Rigorous quality management
- Performance longevity with advanced polymer backsheet
- Electrical tests and visual inspections
- Produced in an ISO 9001: 2008 facility
- System and design services available

#### USA Headquarters

5765 Peachtree Industrial Blvd.,  
Norcross, GA 30092  
(o) +1 404 477 2700

[www.suniva.com](http://www.suniva.com)

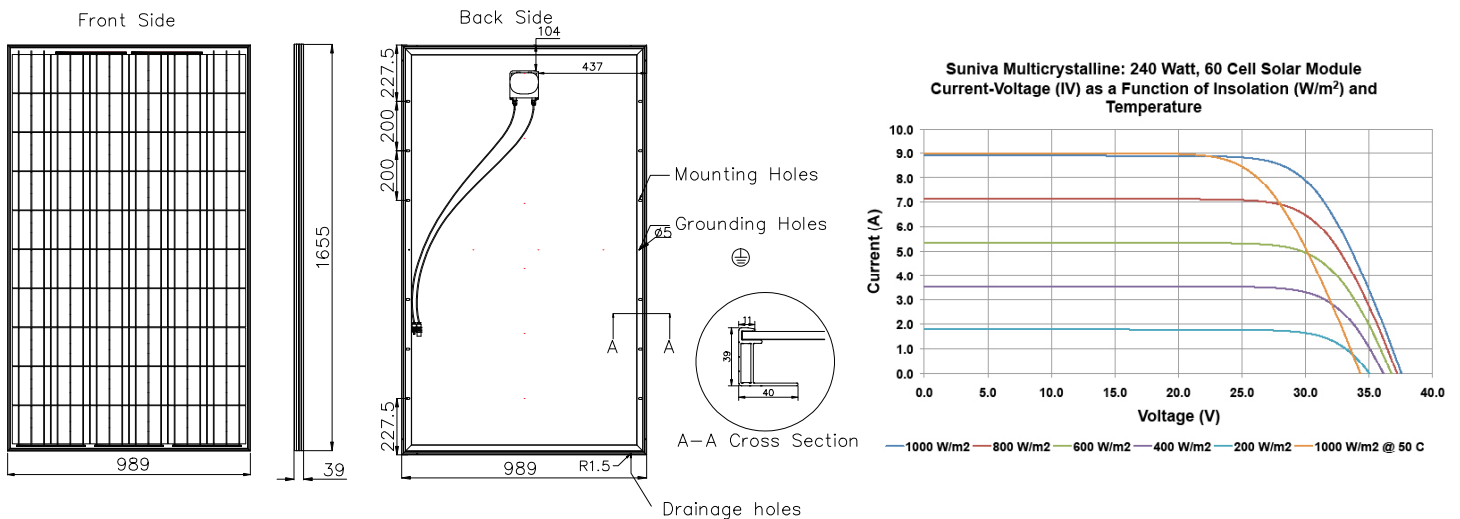
#### Americas

Americas@suniva.com  
**Federal Government**  
Govt@suniva.com  
**Europe**  
Europe@suniva.com

#### Middle East/Africa

MEA@suniva.com  
**Asia Pacific**  
AsiaPacific@suniva.com  
**EXIM Financing**  
EXIM@suniva.com

# SUNIVA MVP™ SERIES MULTICRYSTALLINE SOLAR MODULES



## ELECTRICAL DATA (NOMINAL)

The electrical data apply to standard test conditions (STC): Irradiance of 1000 W/m<sup>2</sup> with AM 1.5 spectra at 25°C.

Power Classification (Max.)	P <sub>max</sub> (W)	230	235	240
MVP Model Number	MVS	230-60-5-501	235-60-5-501	240-60-5-501
Voltage at Max. Power Point	V <sub>mp</sub> (V)	28.76	29.19	29.61
Current at Max. Power Point	I <sub>mp</sub> (A)	8.04	8.09	8.14
Open Circuit Voltage	V <sub>oc</sub> (V)	36.46	36.74	37.03
Short Circuit Current	I <sub>sc</sub> (A)	8.77	8.80	8.83

The rated power may only vary by -0/+3% and all other electrical parameters by ± 5%

## DIMENSIONS AND WEIGHT

Cells / Module	60 (6x10)
Module Dimensions	1655 x 989 mm (65.16 x 38.94 in.)
Module Thickness (Depth)	39 mm (1.54 in.)
Approximate Weight	19.6 kg (43.21 lbs.)

## CHARACTERISTIC DATA

Type of Solar Cell	Multicrystalline silicon cells 156 mm x 156 mm (6 in.)
Frame	Silver anodized aluminum alloy
Glass	Tempered and low-iron; salt and acid spray resistant tested per 61701
Junction Box	Tyco; NEMA rated IP65; IEC & UL listed; 3 internal diodes
Cable & Connectors	4mm <sup>2</sup> cable with Tyco SolarLok connectors; cable length approximately 1000mm

## TEMPERATURE COEFFICIENTS

Voltage	β, Voc (%/°C)	-0.340
Current	α, I <sub>sc</sub> (%/°C)	+0.045
Power	γ, P <sub>max</sub> (%/°C)	-0.470
NOCT Avg	(+/- 2 °C)	45.0

## LIMITS

Max. System Voltage	1000 VDC for IEC (600 VDC for UL)
Operating Module Temperature	-40° C to +85° C
Storm Resistance/Static Load <sup>1</sup>	Tested to IEC 61215 for loads up to 5400 Pa; hail and wind resistant

<sup>1</sup> Suniva® reserves the right to change the data at any time.

<sup>2</sup> Some certifications may be pending.

<sup>2</sup> View manual at [suniva.com/ourproducts.php](http://suniva.com/ourproducts.php)



Please recycle.