

SPM005P

Multicrystalline Silicon Photovoltaic Module

FEATURE:

- TUV certification
- UL certification
- High power module using 6" Multicrystalline solar cell.
- Using low iron tempered glass, EVA laminate PET backsheet.
- Anodize aluminum frame protected.
- 10 years limited warranty of 90% power output and 25 years limited warranty of 80% power output.



Solartech Power, Inc.
13811 Bentley Place, Cerritos, CA 90703
Tel:562-926-1089 Fax:562-926-1021
www.solartechpower.com
sales@solartechpower.com

ELECTRICAL CHARACTERISTICS

	SPM006P	SPM005P	SPM004P
Power at STC(Pm)	6W	5W	4W
Maximum power voltage(Vpm)	17.3V	17.1V	16.2V
Maximum power current(Ipm)	0.35A	0.29A	0.24A
Open circuit voltage(Voc)	21.8V	21.7V	21.4V
Short circuit current(Isc)	0.38A	0.31A	0.28
Tolerance	±5%	±5%	±5%
Module efficiency	7.7%	6.5%	5.1%
Maximum system voltage	1000V DC		
Standard test conditions	Temperature 25°C, Irradiance 1000W/m ² , AM=1.5		
Temperature coefficient	Isc:0.05%/K	Voc:-0.36%/K	Pmax:-0.46%/K

Specifications

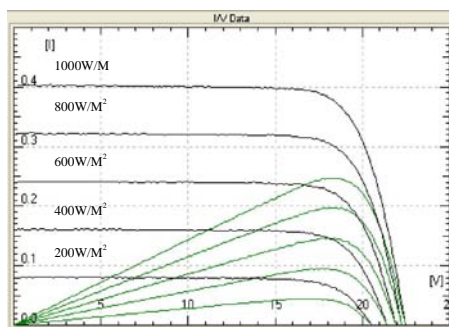
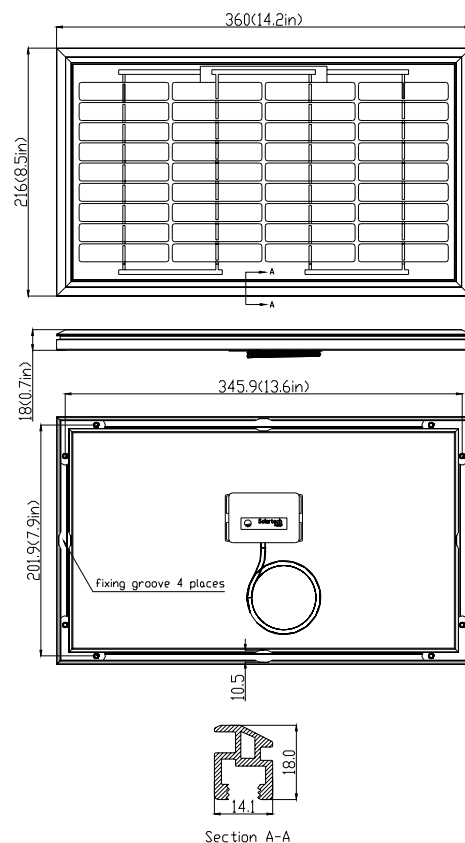
Cell	Multicrystalline silicon solar cell, (78mmx15.6mm)
No. of cell and connection	36(4x9)
Dimension	360mm (14.2in) x216mm(8.5in)x18mm(0.7in)
Weight	1.2KG

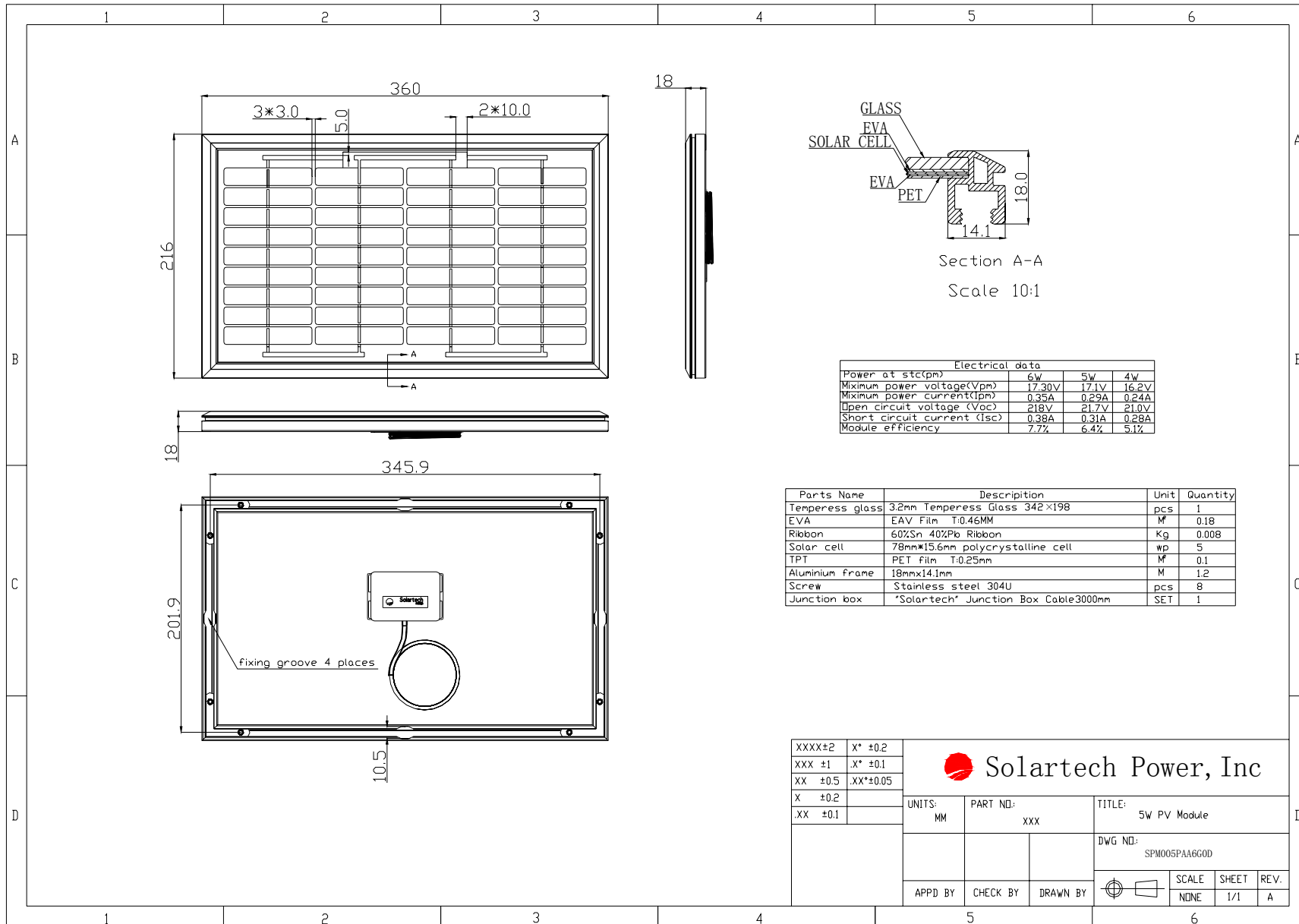
AMBIENT CONDITIONS

Operating Temperature	-40°C to +85°C
Storage Humidity	<90%

OUT PUT

Type of output terminal	Junction box
Cable	Length 3000mm

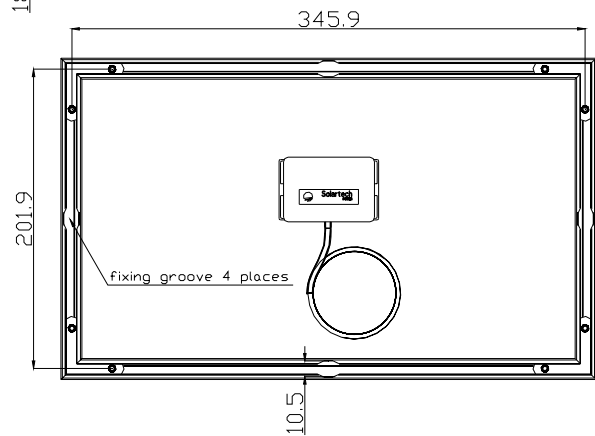
IV CURVES

OUTLINE DIMENSIONS




Section A-A
Scale 10:1

Electrical data			
Power at stc(pn)	6W	5W	4W
Maximum power voltage(V _{mp})	17.30V	17.1V	16.2V
Maximum power current(I _{mp})	0.35A	0.29A	0.24A
Open circuit voltage (V _{oc})	21.8V	21.7V	21.0V
Short circuit current (I _{sc})	0.38A	0.31A	0.28A
Module efficiency	7.7%	6.4%	5.1%

Parts Name	Description	Unit	Quantity
Temperess glass	3.2mm Temperess Glass 342×198	pcs	1
EVA	EAV Film T:0.46MM	M ²	0.18
Ribbon	60%Sn 40%Pb Ribbon	Kg	0.008
Solar cell	78mm×15.6mm polycrystalline cell	wp	5
TPT	PET film T:0.25mm	M ²	0.1
Aluminium frame	18mm×14.1mm	M	1.2
Screw	Stainless steel 304U	pcs	8
Junction box	*Solartech* Junction Box Cable3000mm	SET	1



XXXX±2	X* ±0.2			
XXX ±1	.X* ±0.1			
XX ±0.5	.XX*±0.05			
X ±0.2		UNITS:	PART NO.:	TITLE:
.XX ±0.1		MM	xxx	5W PV Module
		DWG NO.:		
		SPM005PAA6G0D		
		APPD BY	CHECK BY	DRAWN BY
		SCALE	SHEET	REV.
		NONE	1/1	A

Product picture



Front



Back



Anodized aluminium



Junction



Cable