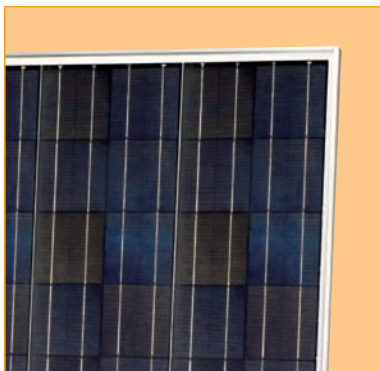
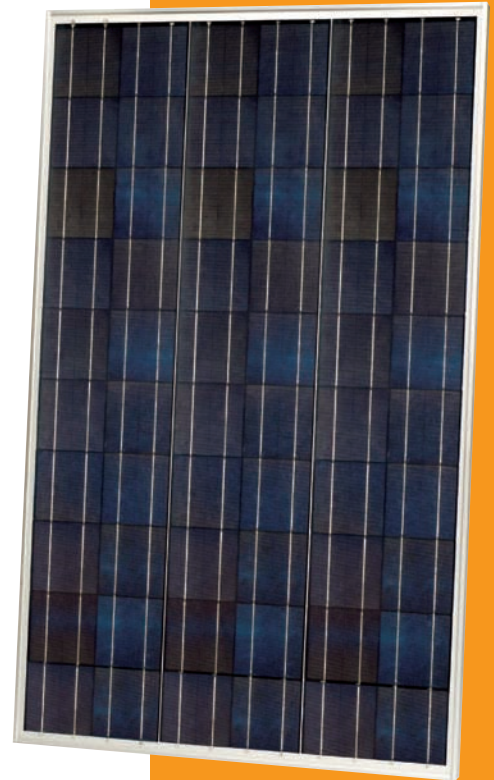


200 WATT

NEXT GENERATION. BREAKTHROUGH PERFORMANCE.

POLY-CRYSTALLINE SILICON PHOTOVOLTAIC MODULE WITH 200W MAXIMUM POWER

This poly-crystalline 200 watt module features 12.3% module efficiency for an outstanding balance of size and weight to power and performance. Using breakthrough technology perfected by Sharp's 45 years of research and development, these modules incorporate an advanced surface texturing process to increase light absorption and improve efficiency. Common applications include office buildings, cabins, solar power stations, solar villages, radio relay stations, beacons, traffic lights and security systems. Ideal for grid-connected systems and designed to withstand rigorous operating conditions, Sharp's ND-200U1 modules offer maximum power output per square foot of solar array.



Solder-coated grid results in high fill factor performance under low light conditions.



Sharp multi-purpose modules offer industry-leading performance for a variety of applications.

FEATURES

- High-power module (200W) using 155mm square poly-crystalline silicon solar cells with 12.3% module conversion efficiency
- Sharp's advanced surface texturing process increases light absorption and efficiency while providing a more subdued, "natural" look
- Bypass diodes minimize the power drop caused by shade
- White tempered glass, EVA resin, and a weatherproof film, plus aluminum frame for extended outdoor use
- UL Listings: UL1703, cUL
- Sharp modules are manufactured in ISO 9001 certified facilities
- 25-year limited warranty on power output (see dealer for details)

ELECTRICAL CHARACTERISTICS

| | |
|--------------------------------|--------------------------|
| Cell | Poly-crystalline silicon |
| No. of Cells and Connections | 60 in series |
| Open Circuit Voltage (Voc) | 35.5V |
| Maximum Power Voltage (Vpm) | 28.5V |
| Short Circuit Current (Isc) | 7.82A |
| Maximum Power Current (Ipm) | 7.02A |
| Maximum Power (Pmax)* | 200W (+10% / -5%) |
| Module Efficiency (η_m) | 12.3% |
| Maximum System Voltage | 600VDC |
| Series Fuse Rating | 15A |
| Type of Output Terminal | Cable with MC Connector |

* (STC) Standard Test Conditions: 25°C, 1 kW/m², AM 1.5

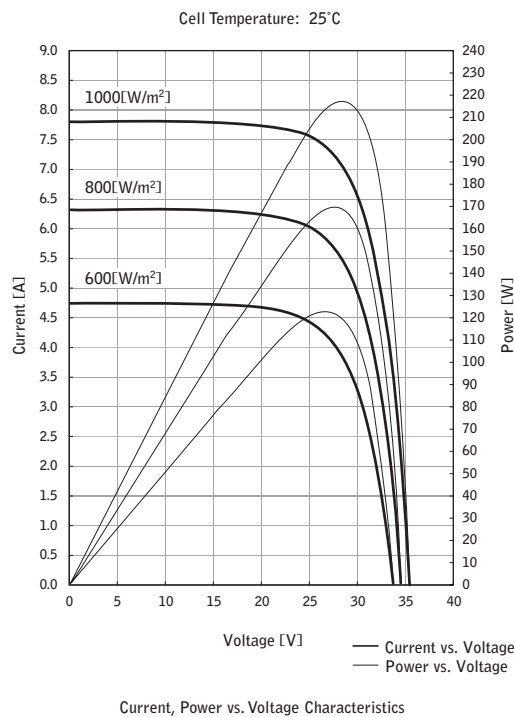
MECHANICAL CHARACTERISTICS

| | |
|------------------------------------|--|
| Dimensions (L x W x D) | 64.6" x 39.1" x 1.8" / 1640mm x 994mm x 46mm |
| Weight | 46.3lbs / 21kg |
| Size of Carton | 68.3" x 43.2" x 4.5" / 1735mm x 1097mm x 114mm |
| Carton Quantity | 2 pcs per carton |
| Pallet Quantity | 28 pcs per pallet |
| Loading Capacity (48 ft container) | 448 pcs (16 pallets) |
| Loading Capacity (53 ft container) | 476 pcs (17 pallets) |

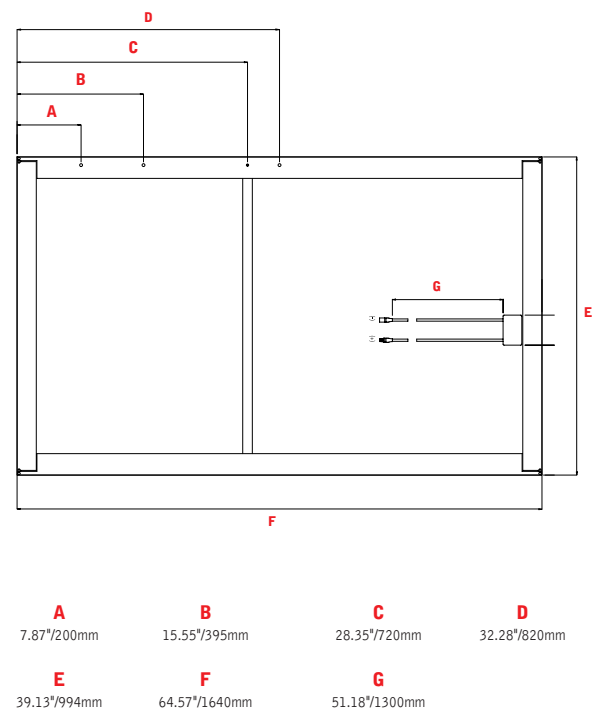
ABSOLUTE MAXIMUM RATINGS

| | |
|---|------------------------------|
| Operating Temperature (min to max, °F/°C) | -40 to +194°F / -40 to +90°C |
| Storage Temperature (min to max, °F/°C) | -40 to +194°F / -40 to +90°C |

IV CURVES



DIMENSIONS



Design and specifications are subject to change without notice.

In the absence of confirmation by product manuals, Sharp takes no responsibility for any defects that may occur in equipment using any Sharp devices. Contact Sharp to obtain the latest product manuals before using any Sharp device.

