

Uni-Rac SolarMount

UNI-RAC™

SolarMount Universal Roof Mounts - Top Down

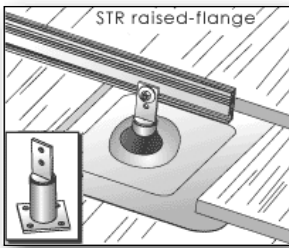
SolarMounts offer an easy, fast and safe way to install a PV array on the roof of any building.

- Top down clamps for framed PV modules.
- Rooftop Assembly – An entire array can be fully installed and wired on the roof 1 module at a time.
- Easy Installation – Continuous, slotted rails provide infinite adjustability for captive bolt positioning.
- Bi-directional Mounting – Mount modules horizontally or vertically or use both orientations in limited space situations.
- Meet Building Code Requirements – SolarMounts securely attach the array to the roof in compliance with U.S. Building Codes.
- SM108 and larger are usually shipped via Motor Freight due to their length. There is an additional charge to ship model #'s SMR120 through SMR204 via UPS. Rails are cut in half. Order the cut and splice kit to ship UPS – #963UNIUPS-20 – MSRP-\$20.00.

Solar Module	# of Modules	Order Rail# – Clamp#	Solar Module	# of Modules	Order Rail# – Clamp#	
AstroPower AP110/120	2	SMR60-CT2C	Shell SP70/75	4	SMR96-CT4C	
	3	SMR84-CT3C		5	SMR120-CT5C	
	4	SMR120-CT4C		6	SMR144-CT6C	
	5	SMR144-CT5C		7	SMR156-CT7C	
	6	SMR168-CT6C		8	SMR180-CT8C	
	7	SMR192-CT7C		Shell SP140/150	2	SMR72-CT2D
	AstroPower APx130/140	2			SMR84-CT2C	3
3		SMR120-CT3C	4		SMR144-CT4D	
4		SMR144-CT4C	5		SMR168-CT5D	
5		SMR180-CT5C	6		SMR204-CT6D	
Sanyo 167/180		2	SMR84-C2S		SunWize SW85/90	2
	3	SMR108-C3S	3			SMR84-CT3C
	4	SMR144-C4S	4	SMR106-CT4C		
	5	SMR180-C5S	5	SMR132-CT5C		
Sharp 123	2	SMR60-CT2F	SunWize SW100/115/120	6	SMR156-CT6C	
	3	SMR84-CT3F		7	SMR180-CT7C	
	4	SMR120-CT4F		8	SMR204-CT8C	
	5	SMR144-CT5F		Uni-Solar US64	2	SMR60-CT2C
	6	SMR168-CT6F			3	SMR84-CT3C
	7	SMR192-CT7F			4	SMR120-CT4C
	Sharp 165/185	2			SMR72-CT2F	5
3		SMR106-CT3F	6		SMR168-CT6C	
4		SMR144-CT4F	7		SMR192-CT7C	
5		SMR180-CT5F	Uni-Solar US116		2	SMR72-CT2B
6		SMR204-CT6F		3	SMR96-CT3B	
Shell SM110	2	SMR60-CT2D		4	SMR132-CT4B	
	3	SMR84-CT3D		5	SMR156-CT5B	
	4	SMR120-CT4D		6	SMR192-CT6B	
	5	SMR144-CT5D		Uni-Solar US116	2	SMR72-CT2E
	6	SMR168-CT6D			3	SMR96-CT3E
	7	SMR192-CT7D	4		SMR132-CT4E	
	Shell SP70/75	2	SMR48-CT2C		5	SMR168-CT5E
3		SMR72-CT3C	6		SMR192-CT6E	

Rails - includes 2 rails, L-feet and hardware			Model	# of L-feet	MSRP	Model	MSRP	Bottom Mounting Clamp Sets		
Model	# of L-feet	MSRP					Model	MSRP		
SMR48	4	\$83.00	SMR132	6	\$190.00	CT3A through F	\$20.00	CB2	\$14.00	
SMR60	4	\$99.00	SMR144	6	\$202.00	CT4A through F	\$24.00	CB3	\$18.00	
SMR72	4	\$115.00	SMR156	6	\$214.00	CT5A through F	\$28.00	CB4	\$22.00	
SMR84	4	\$131.00	SMR168	6	\$226.00	CT6A through F	\$32.00	CB5	\$26.00	
SMR96	4	\$145.00	SMR180	6	\$238.00	CT7A through F	\$36.00	CB6	\$30.00	
SMR106	4	\$157.00	SMR192	8	\$259.00	CT8A through F	\$40.00	CB7	\$34.00	
SMR108	4	\$157.00	SMR204	8	\$271.00	C2S	\$16.00	CB8	\$38.00	
SMR120	6	\$178.00	Top Mounting Clamp Sets			C3S	\$20.00			
			CT2A through F			\$16.00	C4S	\$24.00		
						C5S	\$28.00			

Module Mounts

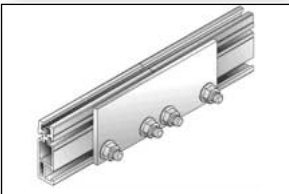


Uni-Rac Standoff

UNI-RAC™

SolarMount Accessories

Raised flange Standoff used for flashed, roof-mounted installations.		Weight	MSRP
STR3	1 each 3 inch standoff and fasteners	2 lbs.	\$18.00
STR6	1 each 6 inch standoff and fasteners	2 lbs.	\$19.00
963ACC001	No caulk roof flashing		\$ 9.00
SP2 Splice Kits	Required if two rail sets are spliced together. Kit contains 2 each rail splices and fasteners		\$16.00



Uni-Rac Splice Kit

SolarMount Tilt Leg Kits

Tilt Leg Kits are used to tilt the array to a more optimum angle to enhance overall system performance. These kits feature a quick locking adjustment that makes even seasonal adjustments fast and easy.

Low Profile Adjustable Tilt Legs

Use the chart below to select the Low Profile Tilt Leg kit required for your modules. Total tilt legs (not kits) must equal half the total number of L-feet in your installation.

Low Profile Tilt Leg Sizing Chart (Tilt Angle Range in Degrees)

Module	TLL2-12 or TLL3-12	TLL2-30 or TLL3-30	TLL2-44 or TLL3-44
AstroPower AP110/120	7-17	17-43	25-60+
AstroPower APx130/140	5-13	13-32	19-49
Sanyo 167/180	8-19	19-49	28-60+
Sharp 123	7-16	17-43	25-60+
Sharp 165/185	7-16	16-40	24-60+
Shell SM110	8-19	19-48	28-60+
Shell SP70/75	9-20	21-54	31-60+
Shell SP140/150	7-15	16-39	23-60
SunWize SW85/90/100/115/120	8-17	18-44	26-60+
Uni-Solar US64	8-18	19-47	27-60+
Uni-Solar US116	4-10	10-26	15-39

Low Profile Kits

Model	Legs per Kit	MSRP
TLL2-12	2	\$49.00
TLL2-30	2	\$59.00
TLL2-44	2	\$67.00
TLL3-12	3	\$68.00
TLL3-30	3	\$83.00
TLL3-44	3	\$94.00

High Profile Adjustable Tilt Legs

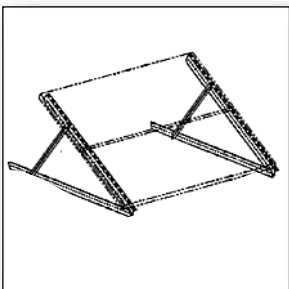
Use the chart below to select the High Profile Tilt Leg Kit required for your rail sets. Order one TLH Tilt Leg Kit for each rail set. TLH2 kits have 2 legs per kit; TLH4 kits have 4 legs per kit.

High Profile Tilt Leg Sizing Chart

Rail Set	TLH2-12	TLH2-44	TLH2-72	Rail Set	TLH4-18	TLH4-64	TLH4-104
SMR48	9-21	31-60+	NA	SMR120	5-10	17-38	27-60+
SMR60	7-17	24-60+	40-60+	SMR132	4-9	15-35	24-59
SMR72	6-14	20-54	33-60+	SMR144	4-8	14-32	22-53
SMR84	5-12	17-46	28-60+	SMR156	4-8	13-29	20-49
SMR96	4-10	15-40	24-60+	SMR168	3-7	12-27	19-45
SMR106	4-9	13-36	22-60+	SMR180	3-7	11-25	18-42
				SMR192-216	Not recommended		

High Profile Kits

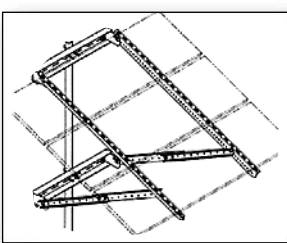
Model	Legs per Kit	MSRP
TLH2-12	2	\$37.00
TLH2-44	2	\$54.00
TLH2-72	2	\$68.00
TLH4-18	4	\$65.00
TLH4-64	4	\$99.00
TLH4-104	4	\$129.00



Uni-Rac U-RV Mount

U-RV Mounts – Mounts designed to fold flat or tilt-up for RV rooftops.

# of Modules: 1	Solar Module:	Mounting Rack Model #	MSRP
	AstroPower AP110/120	U-RV/28	\$70.00
	Sharp 123	U-RV/28	\$70.00
	Sharp 165/185	U-RV/36	\$80.00
	Shell SM110	U-RV/28	\$70.00
	Shell SP70/75	U-RV/24	\$65.00
	Shell SP140/150	U-RV/32	\$75.00
	SunWize SW85/90	U-RV/24	\$65.00
	SunWize SW100/115/120	U-RV/28	\$70.00
	UniSolar US42 & US64	U-RV/32	\$75.00



UNI-RAC™

Side-of-Pole Mounts

UniRac mounting structures incorporate a slotted mounting pattern that fits most PV modules on the market and are manufactured of mill finish aluminum to withstand corrosion.

- 120 mph wind load design
- PV module mounting hardware and U-Bolts for pole mounting are included
- Stainless steel hardware
- 1-year limited warranty
- Adjustable tilt 15° to 60°

Uni-Rac U-PS Mount

Solar Module	# of Modules	Pole Size	Part #	MSRP	Solar Module	# of Modules	Pole Size	Part #	MSRP
AstroPower AP110/120	1	2.5"	U-PS/26M	\$137.00	SunWize OEM5	2	2.5"	U-11/20M	\$103.00
	2	3"	U-PS/52M	\$225.00	SunWize OEM10	2	2.5"	U-PS/32M	\$152.00
	3	4"	U-PS/80M	\$270.00	SunWize OEM20/40	2	2.5"	U-PS/36M	\$163.00
Sharp 123	1	2.5"	U-PS/30XXL	\$156.00	SunWize SW85/90	4	4"	U-PS/72M	\$250.00
	2	3"	U-PS/60XL	\$255.00		1	2.5"	U-11/24L	\$113.00
	3	4"	U-PS/80XL	\$290.00		2	3"	U-PS/52L	\$235.00
Sharp 165/185	1	2.5"	U-PS/32M	\$152.00	3	4"	U-PS/80L	\$280.00	
	2	4"	U-PS/72M	\$250.00	4	4"	U-PS/96L	\$320.00	
Shell SM110	1	2.5"	U-PS/26M	\$137.00	SunWize SW100/115/120	1	2.5"	U-PS/26XXL	\$146.00
	2	3"	U-PS/52M	\$225.00		2	3"	U-PS/52L	\$235.00
	3	4"	U-PS/80M	\$270.00		3	4"	U-PS/80L	\$280.00
Shell SP70/75	1	2.5"	U-11/24M	\$106.00	Uni-Solar US32	2	2.5"	U-PS/32XL	\$158.00
	2	2.5"	U-PS/44M	\$184.00	Uni-Solar US42	2	3"	U-PS/60M	\$235.00
	3	3"	U-PS/64M	\$240.00	3	4"	U-PS/88L	\$300.00	
	4	4"	U-PS/84M	\$280.00	Uni-Solar US64	1	2.5"	U-PS/30XL	\$153.00
Shell SP140/150	1	2.5"	U-PS/32M	\$152.00	2	3"	U-PS/60L	\$245.00	
	2	3"	U-PS/64M	\$240.00	3	4"	U-PS/88L	\$300.00	